

# Standard Package

www.fiberfox.co.kr

Mini  
4S  
4 Motors Active  
Clad Alignment Splicer



- 1 MINI 4S Splicer
- 2 Cleaver Pouch
- 3 MINI 50G Cleaver
- 4 Power Cord
- 5 USB Cable
- 6 AC Adapter
- 7 Car Cigar Jack
- 8 Cooling Tray
- 9 Spare Electrode
- 10 Connector Heater Block
- 11 Connector Holder
- 12 2 Battery Packs
- 13 Shoulder Strap
- 14 Operation Manual CD
- 15 Hand Carrying Case

# Specifications

Splicing Method	Clad Alignment DCA(Digitalized Cladding Alignment)
Average Loss	SM(0.03dB) / MM(0.01dB) / DS(0.05dB) / NZDS(0.05dB) / G.657(0.03dB)
Return Loss	>>60dB
Splice Time	12s average SM / SM 7s Quick mode
Electrode Lifespan	>3,500 arcs
Applicable Fiber	SM(ITU-T G.652, MM(ITU-T G.651), DS(ITU-T G.653), NZDS(ITU-T G.655), IT-G657A, IT-G657B 0.25mm, 0.9mm, 2.0mm, 2.4mm, 3.0mm, FLAT(indoor cable)
Cleaved Length	Coating Diameter < 0.25mm = 5-16mm, Coating Diameter > 0.25mm = 8-16mm minimum
Coating Diameter	100-1000um
Cladding Diameter	80-150um
Heating Programs	Factory installed mode : 3, User installable mode : 23
Heating Time	Typical 18s
Protection Sleeve	40mm, 60mm, SOC-3.0, SOC-0.9
Data Output	Micro HDMI-USB master device
Splice Programs	7 user modes, User installable mode : 70+
Splice Memory	Up to 2000 records
Battery	Typical 130 Cycles (Splice & Heat) / single battery <2 Batteries Standard>
Power Supply	AC 100-240V input or DC 9-14V
Monitor	Color 4.3" LCD monitor, with Touch Screen (Tempered Glass)
Cameras	2 CCD camera system
Magnification	XY : 150 times, X/Y : 300 times
Fiber Display	X/Y or XY, single X,Y
Weight	1.35Kg (without battery)
Size	124mm X 123mm X 130 mm
Wind Protection	The max wind speed 15m/s
Operating Environment	Elevation 0-5000 meters, -15~60°C, 0-95% relative humidity
Storage Condition	Temperature -40 to 80°C, 0-95% relative humidity, battery -20-30°C
Pull Test	1.96-2.25N (standard)



# 4 Motors Active Clad Alignment Splicer

Designed for FTTx  
Mini & Ultra accurate - Typical 0.03dB  
HD Color & Touch screen  
Basic 2 Batteries  
Clad Alignment DCA  
Multi-functional fiber holder  
Splice on connentor for FTTx



Copyright © 2013 FiberFox, Inc. All rights reserved.  
(Kwang Yi B/D) 80, Dongseo-daero 179beon-gil, Yuseong-gu, Daejeon 305-320, Korea  
Tel : +82-42-716-7221 / Fax : +82-42-716-7223 / E-mail : sales@fiberfox.co.kr

www.fiberfox.co.kr



# Characteristic



The Fastest Heating Time  
- 18 sec <60mm sleeve>



Universal Holder  
- 250  $\mu$ m  
- 900  $\mu$ m  
- 2-3 $\emptyset$   
- Indoor



Applicable Cleaved Length  
- Up to 5mm



Two Batteries are Included in Standard Package  
- 200 cycles (splicing & heating) with one battery



Full Touch Screen  
- GUI Interface  
- Tempered Glass



## 01

4 Motors Active  
Clad Alignment Splicer



1.35kg  
(Without Battery)

## 02

SOC  
Compatible

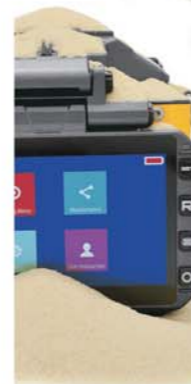


## 03

Durability



Anti-shock



Dustproof

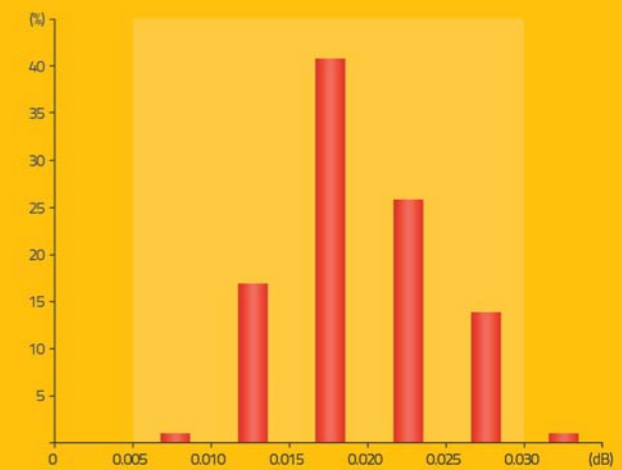


Waterproof

## 04

Performance

The most stable loss condition  
under different  
environmental conditions



0.030dB > 85%